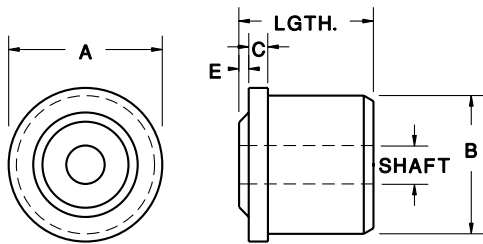


# Roll-End Bearings



Specify shaft size for quotes or when placing an order.

**CUSTOM SIZES & MATERIALS**

## Standard Duty Roll End Bearings

Wood	UHMW	OF/ UHMW	A (Tube OD)	Gauge (Wall Thk.)	B (Tube ID)	Length	C	E
0304048	0301048	0303048	1-3/8	18	1.277	1-1/4	3/16	1/16
0304049	0301049	0303049		16	1.245	1-1/4	3/16	1/16
0304050	0301050	0303050	1-1/2	18	1.402	1-1/2	3/16	1/16
0304051	0301051	0303051		16	1.370	1-1/2	3/16	1/16
0304052	0301052	0303052		14	1.334	1-1/2	3/16	1/16
0304054	0301054	0303054	1-5/8	16	1.495	1-1/2	3/16	1/16
0304055	0301055	0303055		11	1.385	1-1/2	3/16	1/16
0304056	0301056	0303056	1.660	1-1/4 SCH 40	1.380	1-1/2	3/16	1/16
0304057	0301057	0303057		1-1/4 SCH 80	1.278	1-1/2	3/16	1/16
0304059	0301059	0303059	1-3/4	16	1.620	1-1/2	3/16	1/16
0304060	0301060	0303060		14	1.584	1-1/2	3/16	1/16
0304065	0301065	0303165	1.900	1-1/2 SCH 40	1.610	1-1/2	3/16	1/16
0304066	0301066	0303166		1-1/2 SCH 80	1.500	1-1/2	3/16	1/16
0304069	0301069	0303069	2	16	1.870	1-5/8	1/4	1/8
0304070	0301070	0303070		14	1.834	1-5/8	1/4	1/8
0304072	0301072	0303072		11	1.760	1-5/8	1/4	1/8
0304073	0301073	0303073	2.197	2 EMT	2.067	1-5/8	1/4	1/8
0304074	0301074	0303074	2-1/4	18	2.152	1-5/8	1/4	1/8
0304075	0301075	0303075		16	2.120	1-5/8	1/4	1/8
0304076	0301076	0303076		14	2.084	1-5/8	1/4	1/8
0304080	0301080	0303080	2-3/8	16	2.245	1-5/8	1/4	1/8
0304081	0301081	0303081		13	2.185	1-5/8	1/4	1/8
0304083	0301083	0303083	2.375	2 SCH 40	2.067	1-5/8	1/4	1/8
0304084	0301084	0303084		2 SCH 80	1.939	1-5/8	1/4	1/8
0304085	0301085	0303085	2-1/2	16	2.370	1-5/8	1/4	1/8
0304086	0301086	0303086		14	2.334	1-5/8	1/4	1/8
0304087	0301087	0303087		13	2.310	1-5/8	1/4	1/8
0304090	0301090	0303090	2-3/4	16	2.620	1-5/8	1/4	1/8
0304091	0301091	0303091		13	2.560	1-5/8	1/4	1/8
0304093	0301093	0303093	2.875	2-1/2 SCH 40	2.469	1-5/8	1/4	1/8
0304094	0301094	0303094		2-1/2 SCH 80	2.323	1-5/8	1/4	1/8
0304095	0301095	0303095	3	16	2.870	1-3/4	1/4	1/8
0304096	0301096	0303096		14	2.834	1-3/4	1/4	1/8
0304097	0301097	0303097		13	2.810	1-3/4	1/4	1/8
0304098	0301098	0303098		11	2.760	1-3/4	1/4	1/8
0304104	0301104	0303104	3.5	3 SCH 40	3.068	1-3/4	1/4	1/8
0304105	0301105	0303105		3 SCH 80	2.900	1-3/4	1/4	1/8
0304108	0301108	0303108	4	16	3.870	1-3/4	1/4	1/8
0304109	0301109	0303109		14	3.834	1-3/4	1/4	1/8
0304110	0301110	0303110		13	3.810	1-3/4	1/4	1/8
0304111	0301111	0303111		11	3.760	1-3/4	1/4	1/8
0304112	0301112	0303112	4.000	3-1/2 SCH 40	3.548	1-3/4	1/4	1/8
0304113	0301113	0303113		3-1/2 SCH 80	3.364	1-3/4	1/4	1/8
0304114	0301114	0303114	5	11	4.760	1-3/4	1/4	1/8
0304115	0301115	0303115	6	11	5.760	1-3/4	1/4	1/8
0304116	0301116	0303116	6.625	6 SCH 40	6.065	1-3/4	1/4	1/8
0304117	0301117	0303117		6 SCH 80	5.761	1-3/4	1/4	1/8

