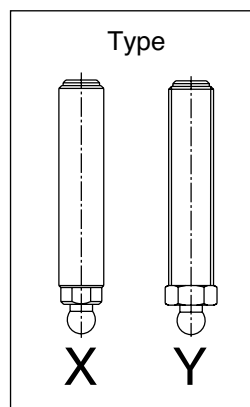
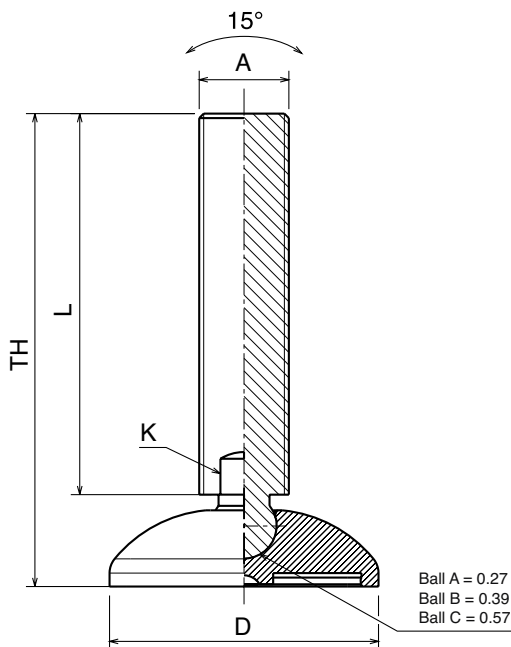


Adjustable Leveler Basic



Spindle material

| Part # SS | Part # FeZn | D | A | K | TH | L | Ball | Type | LBS |
|-----------|-------------|------|--------|------|------|------|------|------|------|
| 90102Y | 90102ZY | 1.58 | 3/8-16 | 0.28 | 3.94 | 3.35 | A | X | 2250 |
| 90202Y | 90202ZY | 1.58 | 1/2-13 | 0.35 | 3.94 | 3.35 | B | X | 2700 |
| 90203Y | 90203ZY | 1.58 | 1/2-13 | 0.35 | 5.9 | 5.31 | B | X | 2700 |
| 90302Y | 90302ZY | 1.58 | 5/8-11 | 0.51 | 3.94 | 3.35 | B | X | 3375 |
| 90303Y | 90303ZY | 1.58 | 5/8-11 | 0.51 | 5.9 | 5.31 | B | X | 3375 |
| 90302HY | 90302ZHY | 1.58 | 5/8-11 | 0.63 | 3.94 | 3.35 | B | Y | 3375 |
| 90303HY | 90303ZHY | 1.58 | 5/8-11 | 0.63 | 5.9 | 5.31 | B | Y | 3375 |

SS: Stainless steel

FeZn: Zinc plated steel

Spindle material

| Part # SS | Part # FeZn | D | A | K | TH | L | Ball | Type | LBS |
|-----------|-------------|------|--------|------|------|------|------|------|------|
| 90402Y | 90402ZY | 1.97 | 3/8-16 | 0.28 | 3.94 | 3.35 | A | X | 2250 |
| 90502Y | 90502ZY | 1.97 | 1/2-13 | 0.35 | 3.94 | 3.35 | B | X | 2700 |
| 90503Y | 90503ZY | 1.97 | 1/2-13 | 0.35 | 5.9 | 5.31 | B | X | 2700 |
| 90602Y | 90602ZY | 1.97 | 5/8-11 | 0.51 | 3.94 | 3.35 | B | X | 3375 |
| 90603Y | 90603ZY | 1.97 | 5/8-11 | 0.51 | 5.9 | 5.31 | B | X | 3375 |
| 90602HY | 90602ZHY | 1.97 | 5/8-11 | 0.63 | 3.94 | 3.35 | B | Y | 3375 |
| 90603HY | 90603ZHY | 1.97 | 5/8-11 | 0.63 | 5.9 | 5.31 | B | Y | 3375 |

SS: Stainless steel

FeZn: Zinc plated steel

Spindle material

| Part # SS | Part # FeZn | D | A | K | TH | L | Ball | Type | LBS |
|-----------|-------------|------|--------|------|------|------|------|------|------|
| 90702Y | 90702ZY | 2.36 | 1/2-13 | 0.35 | 4.13 | 3.35 | B | X | 2700 |
| 90703Y | 90703ZY | 2.36 | 1/2-13 | 0.35 | 6.1 | 5.31 | B | X | 2700 |
| 90801Y | 90801ZY | 2.36 | 5/8-11 | 0.51 | 4.13 | 3.35 | B | X | 3375 |
| 90802Y | 90802ZY | 2.36 | 5/8-11 | 0.51 | 6.1 | 5.31 | B | X | 3375 |
| 90803Y | 90803ZY | 2.36 | 5/8-11 | 0.51 | 8.07 | 7.28 | B | X | 3375 |
| 90801HY | 90801ZHY | 2.36 | 5/8-11 | 0.63 | 4.13 | 3.35 | B | Y | 3375 |
| 90802HY | 90802ZHY | 2.36 | 5/8-11 | 0.63 | 6.1 | 5.31 | B | Y | 3375 |
| 90803HY | 90803ZHY | 2.36 | 5/8-11 | 0.63 | 8.07 | 7.28 | B | Y | 3375 |
| 90902Y | 90902ZY | | 3/4-10 | 0.63 | 6.1 | 5.31 | C | X | 3600 |
| 90903Y | 90903ZY | | 3/4-10 | 0.63 | 8.07 | 7.28 | C | X | 3600 |
| 90902HY | 90902ZHY | | 3/4-10 | 0.79 | 6.1 | 5.31 | C | Y | 3600 |
| 90903HY | 90903ZHY | | 3/4-10 | 0.79 | 8.07 | 7.28 | C | Y | 3600 |

SS: Stainless steel

FeZn: Zinc plated steel

Adjustable Leveler Basic

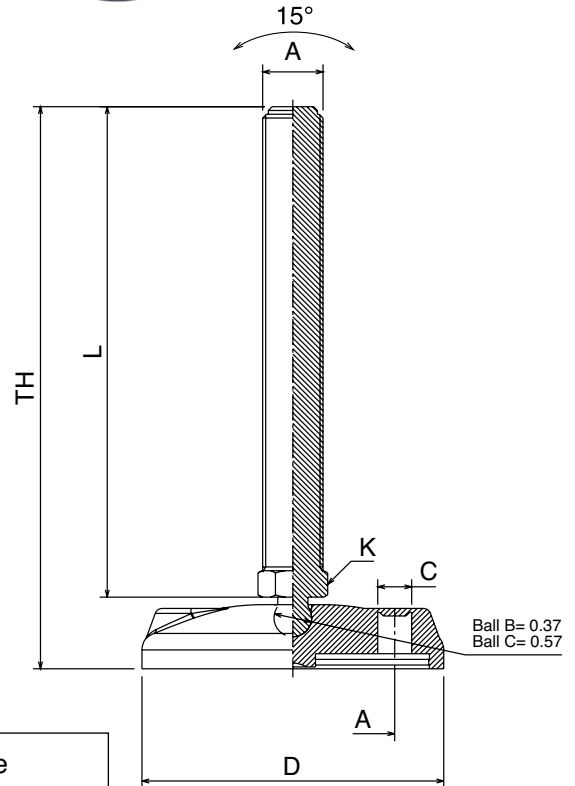
| Spindle material | | | | | | | | | | | |
|------------------|----|----------|------|------|--------|------|------|------|------|------|------|
| Part # | SS | Part # | FeZn | D | A | K | TH | L | Ball | Type | LBS |
| 95302Y | | 95302ZY | | 3.15 | 1/2-13 | 0.35 | 4.13 | 3.35 | B | X | 2700 |
| 95303Y | | 95303ZY | | 3.15 | 1/2-13 | 0.35 | 6.1 | 5.31 | B | X | 2700 |
| 95401Y | | 95401ZY | | 3.15 | 5/8-11 | 0.51 | 4.13 | 3.35 | B | X | 3375 |
| 95402Y | | 95402ZY | | 3.15 | 5/8-11 | 0.51 | 6.1 | 5.31 | B | X | 3375 |
| 95403Y | | 95403ZY | | 3.15 | 5/8-11 | 0.51 | 8.07 | 7.28 | B | X | 3375 |
| 95401HY | | 95401ZHY | | 3.15 | 5/8-11 | 0.63 | 4.13 | 3.35 | B | Y | 3375 |
| 95402HY | | 95402ZHY | | 3.15 | 5/8-11 | 0.63 | 6.1 | 5.31 | B | Y | 3375 |
| 95403HY | | 95403ZHY | | 3.15 | 5/8-11 | 0.63 | 8.07 | 7.28 | B | Y | 3375 |
| 95502Y | | 95502ZY | | 3.15 | 3/4-10 | 0.63 | 6.1 | 5.31 | C | X | 4050 |
| 95503Y | | 95503ZY | | 3.15 | 3/4-10 | 0.63 | 8.07 | 7.28 | C | X | 4050 |
| 95502HY | | 95502ZHY | | 3.15 | 3/4-10 | 0.79 | 6.1 | 5.31 | C | Y | 4050 |
| 95503HY | | 95503ZHY | | 3.15 | 3/4-10 | 0.79 | 8.07 | 7.28 | C | Y | 4050 |

SS: Stainless steel
FeZn: Zinc plated steel



| Spindle material | | | | | | | | | | | |
|------------------|------|----------|---|------|--------|------|------|------|-----|---|------|
| ---SSPart # | FeZn | D | A | K | TH | L | Ball | Type | LBS | | |
| 95601Y | | 95601ZY | | 3.94 | 5/8-11 | 0.51 | 4.25 | 3.35 | B | X | 3375 |
| 95602Y | | 95602ZY | | 3.94 | 5/8-11 | 0.51 | 6.22 | 5.31 | B | X | 3375 |
| 95603Y | | 95603ZY | | 3.94 | 5/8-11 | 0.51 | 8.19 | 7.28 | B | X | 3375 |
| 95601HY | | 95601ZHY | | 3.94 | 5/8-11 | 0.63 | 4.25 | 3.35 | B | Y | 3375 |
| 95602HY | | 95602ZHY | | 3.94 | 5/8-11 | 0.63 | 6.22 | 5.31 | B | Y | 3375 |
| 95603HY | | 95603ZHY | | 3.94 | 5/8-11 | 0.63 | 8.19 | 7.28 | B | Y | 3375 |
| 95702Y | | 95702ZY | | 3.94 | 3/4-10 | 0.63 | 6.22 | 5.31 | C | X | 4050 |
| 95703Y | | 95703ZY | | 3.94 | 3/4-10 | 0.63 | 8.19 | 7.28 | C | X | 4050 |
| 95702HY | | 95702ZHY | | 3.94 | 3/4-10 | 0.79 | 6.22 | 5.31 | C | Y | 4050 |
| 95703HY | | 95703ZHY | | 3.94 | 3/4-10 | 0.79 | 8.19 | 7.28 | C | Y | 4050 |

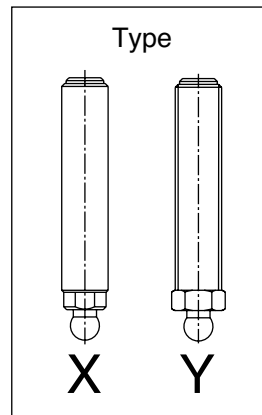
SS: Stainless steel
FeZn: Zinc plated steel




Anti-slip pad



| Part | Article-Nr. | For base |
|------|-------------|----------|
| 996 | 99604 | DIA 3.15 |
| 996 | 99605 | DIA 3.94 |




Adjustable Leveler Standard

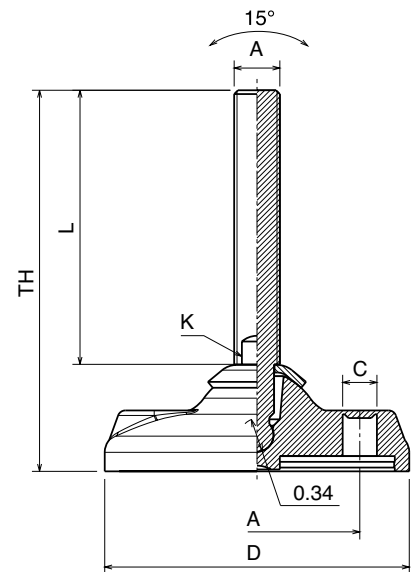
| Spindle material | | | | | | | | | | |  |
|------------------|-------------|------|--------|------|------|------|------|------|------|------|---|
| Part # SS | Part # FeZn | D | A | K | TH | L | A | C | Type | LBS | |
| 91002Y | 91002ZY | 3.15 | 1/2-13 | 0.35 | 5.9 | 4.8 | 2.13 | 0.35 | X | 2700 | |
| 91003Y | 91003ZY | 3.15 | 1/2-13 | 0.35 | 7.87 | 6.77 | 2.13 | 0.35 | X | 2700 | |
| 91101Y | 91101ZY | 3.15 | 5/8-11 | 0.51 | 3.74 | 2.64 | | 0.35 | X | 3375 | |
| 91102Y | 91102ZY | 3.15 | 5/8-11 | 0.51 | 5.71 | 4.61 | | 0.35 | X | 3375 | |
| 91103Y | 91103ZY | 3.15 | 5/8-11 | 0.51 | 7.68 | 6.57 | | 0.35 | X | 3375 | |
| 91202Y | 91202ZY | 3.15 | 3/4-10 | 0.63 | 6.69 | 5.59 | | 0.35 | X | 3600 | |
| 91203Y | 91203ZY | 3.15 | 3/4-10 | 0.63 | 8.66 | 7.56 | | 0.35 | X | 3600 | |
| 91202HY | 91202ZHY | 3.15 | 3/4-10 | 0.79 | 6.69 | 5.59 | | 0.35 | Y | 3600 | |
| 91203HY | 91203ZHY | 3.15 | 3/4-10 | 0.79 | 8.66 | 7.56 | | 0.35 | Y | 3600 | |


SS: Stainless steel
FeZn: Zinc plated steel



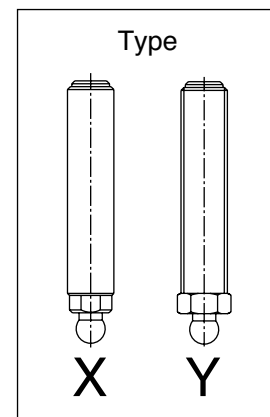
| Spindle material | | | | | | | | | | |  |
|------------------|-------------|------|--------|------|------|------|------|------|------|------|---|
| Part # SS | Part # FeZn | D | A | K | TH | L | A | C | Type | LBS | |
| 91301Y | 91301ZY | 3.94 | 5/8-11 | 0.51 | 3.94 | 2.64 | 2.92 | 0.51 | X | 3375 | |
| 91302Y | 91302ZY | 3.94 | 5/8-11 | 0.51 | 5.9 | 4.61 | 2.92 | 0.51 | X | 3375 | |
| 91303Y | 91303ZY | 3.94 | 5/8-11 | 0.51 | 7.87 | 6.57 | 2.92 | 0.51 | X | 3375 | |
| 91402Y | 91402ZY | 3.94 | 3/4-10 | 0.63 | 6.89 | 5.59 | 2.92 | 0.51 | X | 3600 | |
| 91403Y | 91403ZY | 3.94 | 3/4-10 | 0.63 | 8.86 | 7.56 | 2.92 | 0.51 | X | 3600 | |
| 91402HY | 91402ZHY | 3.94 | 3/4-10 | 0.79 | 6.89 | 5.59 | 2.92 | 0.51 | Y | 3600 | |
| 91403HY | 91403ZHY | 3.94 | 3/4-10 | 0.79 | 8.86 | 7.56 | 2.92 | 0.51 | Y | 3600 | |
| 91502Y | 91502ZY | 3.94 | 1-8 | 0.75 | 6.89 | 5.59 | 2.92 | 0.51 | X | 4050 | |
| 91503Y | 91503ZY | 3.94 | 1-8 | 0.75 | 8.86 | 7.56 | 2.92 | 0.51 | X | 4050 | |

SS: Stainless steel
FeZn: Zinc plated steel




| Spindle material | | | | | | | | | | |  |
|------------------|-------------|------|--------|------|------|------|------|------|------|------|---|
| Part # SS | Part # FeZn | D | A | K | TH | L | A | C | Type | LBS | |
| 91601Y | 91601ZY | 4.72 | 5/8-11 | 0.51 | 3.94 | 2.64 | 3.55 | 0.51 | X | 3375 | |
| 91602Y | 91602ZY | 4.72 | 5/8-11 | 0.51 | 5.9 | 4.61 | 3.55 | 0.51 | X | 3375 | |
| 91603Y | 91603ZY | 4.72 | 5/8-11 | 0.51 | 7.87 | 6.57 | 3.55 | 0.51 | X | 3375 | |
| 91702Y | 91702ZY | 4.72 | 3/4-10 | 0.63 | 6.89 | 5.59 | 3.55 | 0.51 | X | 3600 | |
| 91703Y | 91703ZY | 4.72 | 3/4-10 | 0.63 | 8.86 | 7.56 | 3.55 | 0.51 | X | 3600 | |
| 91702HY | 91702ZHY | 4.72 | 3/4-10 | 0.79 | 6.89 | 5.59 | 3.55 | 0.51 | Y | 3600 | |
| 91703HY | 91703ZHY | 4.72 | 3/4-10 | 0.79 | 8.86 | 7.56 | 3.55 | 0.51 | Y | 3600 | |
| 91802Y | 91802ZY | 4.72 | 1-8 | 0.75 | 6.89 | 5.59 | 3.55 | 0.51 | X | 4050 | |
| 91803Y | 91803ZY | 4.72 | 1-8 | 0.75 | 8.86 | 7.56 | 3.55 | 0.51 | X | 4050 | |

SS: Stainless steel
FeZn: Zinc plated steel




Adjustable Leveler

Leveler diam. 110 mm

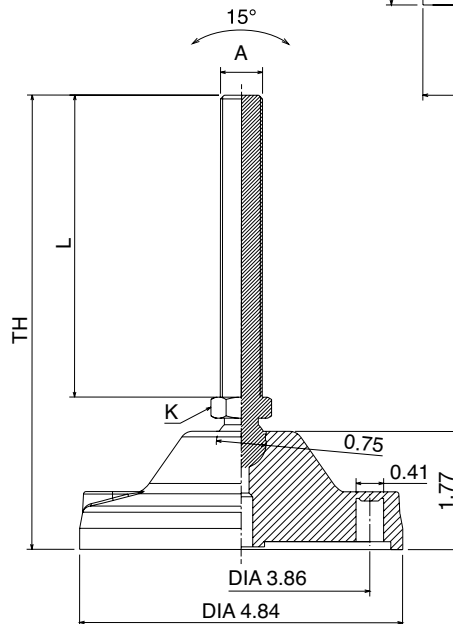
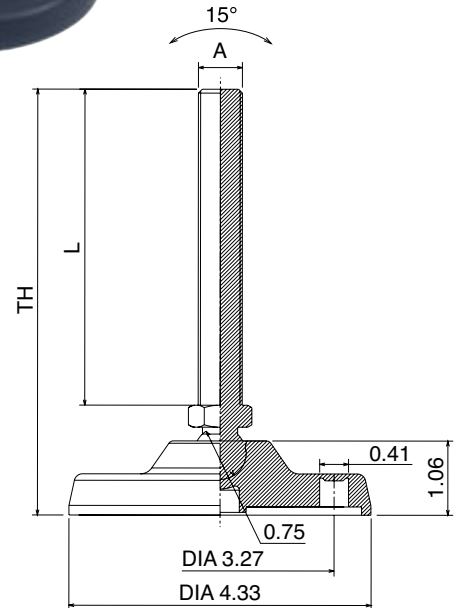
| Spindle material | | | | | | |  |
|------------------|-------------|--------|------|------|------|------|---|
| Part # SS | Part # FeZn | A | K | TH | L | LBS | |
| 94301HY | 94301ZHY | 5/8-11 | 0.79 | 6.1 | 4.53 | 3375 | |
| 94302HY | 94302ZHY | 5/8-11 | 0.79 | 7.28 | 5.71 | 3375 | |
| 94303HY | 94303ZHY | 5/8-11 | 0.79 | 9.25 | 7.68 | 3375 | |
| 94401HY | 94401ZHY | 3/4-10 | 0.79 | 6.1 | 4.53 | 3375 | |
| 94402HY | 94402ZHY | 3/4-10 | 0.79 | 7.28 | 5.71 | 3375 | |
| 94403HY | 94403ZHY | 3/4-10 | 0.79 | 9.25 | 7.68 | 3375 | |
| 94501HY | 94501ZHY | 1-8 | 0.95 | 6.1 | 4.53 | 4050 | |
| 94502HY | 94502ZHY | 1-8 | 0.95 | 7.28 | 5.71 | 4050 | |
| 94503HY | 94503ZHY | 1-8 | 0.95 | 9.25 | 7.68 | 4050 | |

SS: Stainless steel
FeZn: Zinc plated steel


Leveler diam. 4.84

| Spindle material | | | | | | |  |
|------------------|-------------|--------|------|-------|------|------|---|
| Part # SS | Part # FeZn | A | K | TH | L | LBS | |
| 94801HY | 94801ZHY | 5/8-11 | 0.79 | 6.89 | 4.53 | 5620 | |
| 94802HY | 94802ZHY | 5/8-11 | 0.79 | 8.07 | 5.71 | 5620 | |
| 94803HY | 94803ZHY | 5/8-11 | 0.79 | 10.04 | 7.68 | 5620 | |
| 94901HY | 94901ZHY | 3/4-10 | 0.79 | 6.89 | 4.53 | 5620 | |
| 94902HY | 94902ZHY | 3/4-10 | 0.79 | 8.07 | 5.71 | 5620 | |
| 94903HY | 94903ZHY | 3/4-10 | 0.79 | 10.04 | 7.68 | 5620 | |
| 95001HY | 95001ZHY | 1-8 | 0.95 | 6.89 | 4.53 | 5620 | |
| 95002HY | 95002ZHY | 1-8 | 0.95 | 8.07 | 5.71 | 5620 | |
| 95003HY | 95003ZHY | 1-8 | 0.95 | 10.04 | 7.68 | 5620 | |

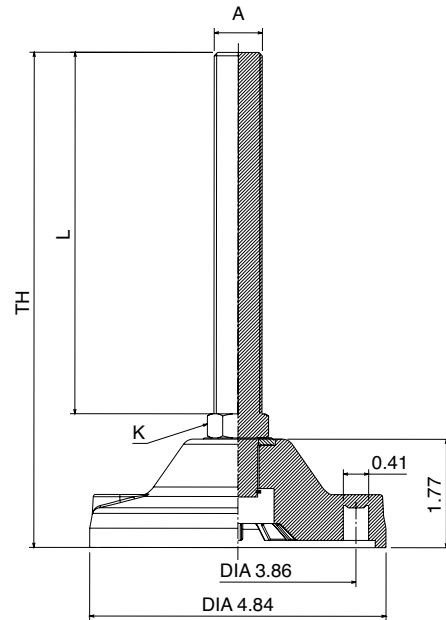
SS: Stainless steel
FeZn: Zinc plated steel



Leveler dia 4.84

| Spindle material | | | | | | | |  | |
|------------------|----------|----------|----------|------|------|------|------|---|-----|
| Part | Art.-Nr. | SS | Art.-Nr. | FeZn | A | K | TH | L | LBS |
| 958 | 95802HY | 95802ZHY | 3/4-10 | 0.79 | 7.87 | 5.83 | 6750 | | |
| 958 | 95803HY | 95803ZHY | 3/4-10 | 0.79 | 9.84 | 7.79 | 6750 | | |
| 959 | 95902HY | 95902ZHY | 1-8 | 0.95 | 7.87 | 5.83 | 6750 | | |
| 959 | 95903HY | 95903ZHY | 1-8 | 0.95 | 9.84 | 7.79 | 6750 | | |

SS: Stainless steel
FeZn: Zinc plated steel



ACCESSORIES

Anti-slip pad



| Part # | For base |
|--------|-----------|
| 99601 | Dia. 1.58 |
| 99602 | Dia. 1.97 |
| 99603 | Dia. 2.36 |
| 99604 | Dia. 3.15 |
| 99605 | Dia. 3.94 |
| 99607 | Dia. 4.33 |
| 99606 | Dia. 4.72 |
| 99608 | Dia. 4.84 |

Stainless steel nuts



| Part # | Spindle |
|--------|---------|
| 99801Y | 3/8-16 |
| 99802Y | 1/2-13 |
| 99804Y | 5/8-11 |
| 99805Y | 3/4-10 |
| 99806Y | 1-8 |

Easy Clean Leveler

Leveler dia 1.97

| Part # | D | A | K | TH | L | LBS |
|--------|------|--------|------|------|------|-----|
| 91902Y | 1.97 | 1/2-13 | 0.35 | 3.94 | 2.95 | 675 |
| 91903Y | 1.97 | 1/2-13 | 0.35 | 5.91 | 4.92 | 675 |
| 92002Y | 1.97 | 5/8-11 | 0.51 | 5.51 | 4.53 | 675 |
| 92003Y | 1.97 | 5/8-11 | 0.51 | 7.48 | 6.5 | 675 |
| 92103Y | 1.97 | 3/4-10 | 0.63 | 6.5 | 5.51 | 675 |

Leveler dia 2.95

| Part # | D | A | K | TH | L | LBS |
|--------|------|--------|------|------|------|------|
| 92202Y | 2.95 | 1/2-13 | 0.35 | 4.13 | 2.95 | 1800 |
| 92203Y | 2.95 | 1/2-13 | 0.35 | 6.1 | 4.92 | 1800 |
| 92302Y | 2.95 | 5/8-11 | 0.51 | 5.7 | 4.53 | 1800 |
| 92303Y | 2.95 | 5/8-11 | 0.51 | 7.68 | 6.5 | 1800 |
| 92403Y | 2.95 | 3/4-10 | 0.63 | 6.69 | 5.51 | 1800 |

Leveler dia 3.94

| Part # | D | A | K | TH | L | LBS |
|--------|------|--------|------|------|------|------|
| 92502Y | 3.94 | 5/8-11 | 0.51 | 5.9 | 4.53 | 4500 |
| 92503Y | 3.94 | 5/8-11 | 0.51 | 7.87 | 6.5 | 4500 |
| 92602Y | 3.94 | 3/4-10 | 0.63 | 6.89 | 5.51 | 4500 |
| 92603Y | 3.94 | 3/4-10 | 0.63 | 8.86 | 7.48 | 4500 |
| 92703Y | 3.94 | 1-8 | 0.75 | 8.86 | 7.48 | 4500 |

Leveler dia 4.97

| Part # | D | A | K | TH | L | LBS |
|--------|------|--------|------|------|------|------|
| 92802Y | 4.97 | 3/4-10 | 0.63 | 7.1 | 5.51 | 6750 |
| 92803Y | 4.97 | 3/4-10 | 0.63 | 9.05 | 7.48 | 6750 |
| 92903Y | 4.97 | 1-8 | 0.75 | 9.05 | 7.48 | 6750 |

